



EstesRockets.com

1:200 Scale NASA SLS

2206



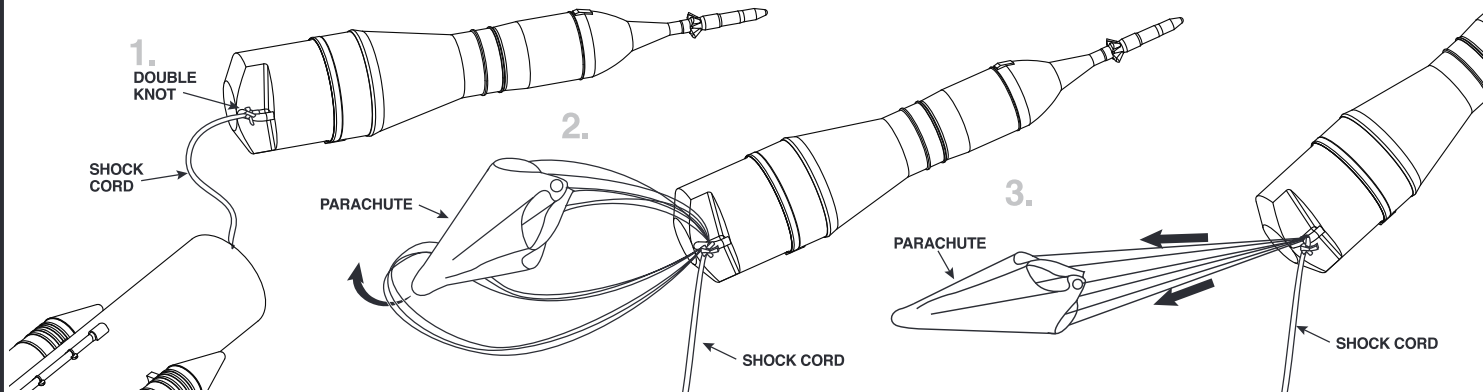
READY TO FLY MODEL ROCKET INSTRUCTIONS

KEEP FOR FUTURE REFERENCE

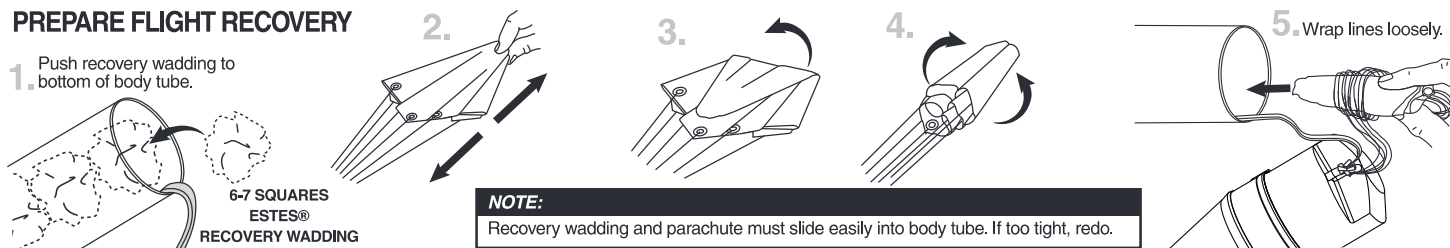
IMPORTANT: Please record date found on box near barcode, and keep for future reference. _____

Read all instructions carefully.

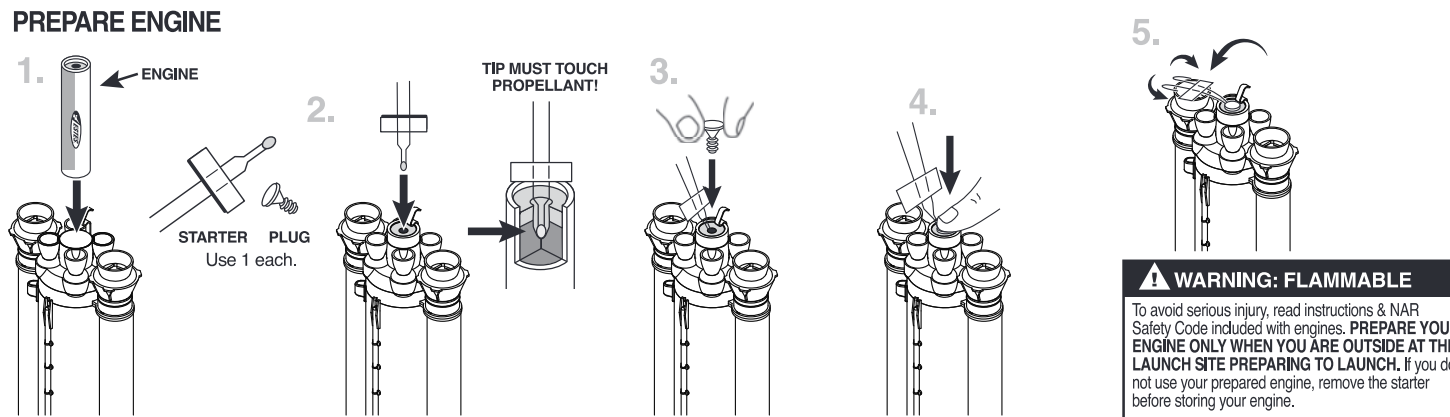
PREPARE RECOVERY SYSTEM



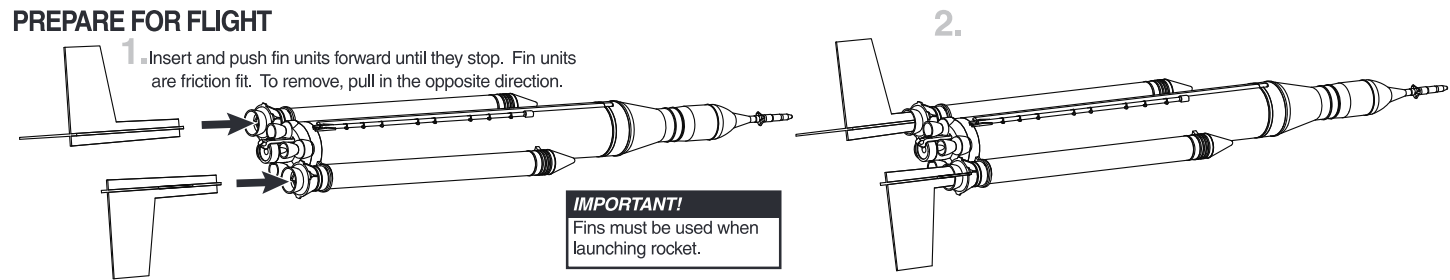
PREPARE FLIGHT RECOVERY



PREPARE ENGINE



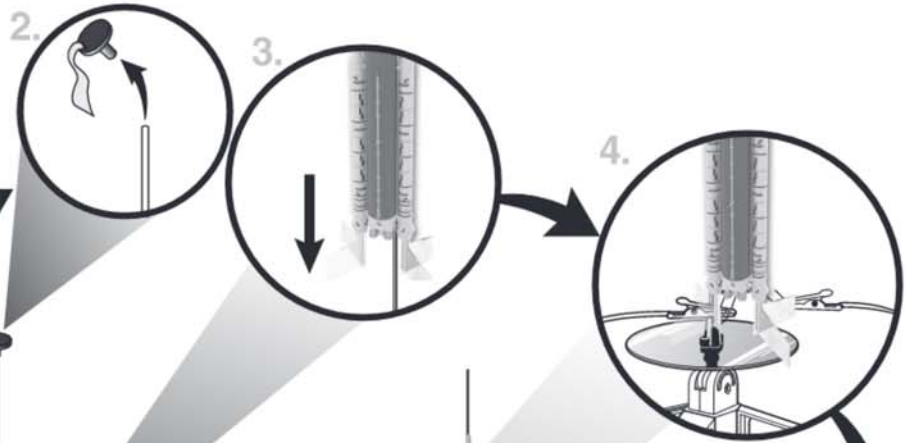
PREPARE FOR FLIGHT



COUNTDOWN AND LAUNCH

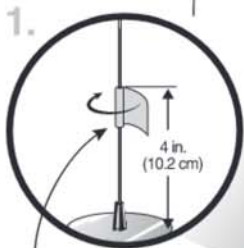
NOTE:

Key always out until final countdown!



NOTE:

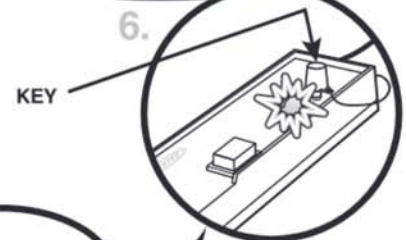
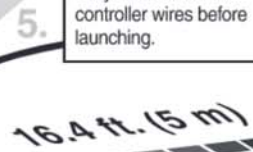
Fully extend launch controller wires before launching.



MASKING TAPE

IMPORTANT!

Fins must be used when launching rocket.



Insert safety key. Press HARD! (If bulb does not light, you are not pressing hard enough.)

NOTE:

Estimated weight: 4.2 oz. (119.1 g)

ESTES LAUNCH SUPPLIES NEEDED (Sold Separately)

- Launch Pad
- Launch Controller
- Recovery Wadding
- Starters (with engines)
- Plugs (with engines)
- Estes® Engines: C5-3, C6-3

Continue to hold safety key down FIRMLY. Count down. Press launch button. LIFTOFF!

PRECAUTIONS



NAR SAFETY CODE



NO DRY GRASS OR WEEDS

PRE-LAUNCH CHECK For safety, never launch a damaged rocket. Check the rocket's body, nose cone and fins. Also, check the engine mount, recovery system and launch lug(s). Repair any damage before launching the rocket.

FLYING YOUR ROCKET Choose a large field (500 ft. [152 m] square) free of dry weeds and brown grass. The larger the launch area, the better your chance of recovering your rocket. Football fields and playgrounds are great. Launch only with little or no wind and good visibility. Always follow the National Association of Rocketry (NAR) SAFETY CODE.

MISFIRES TAKE THE KEY OUT OF THE CONTROLLER. WAIT ONE MINUTE BEFORE GOING NEAR THE ROCKET! Disconnect the micro-clips from the starter. Remove the engine from the rocket. Remove the plug and starter from the engine. If the starter is burned, it was not inserted correctly; it must touch the propellant inside the engine. Insert a new starter all the way inside the engine without bending it. Then insert the plug to hold the starter firmly in place. Repeat the steps under COUNTDOWN AND LAUNCH.

